

Building a Strategic Alliance for Florida's Mobility



TEAMFL Overview

- Formed in 1997
- Information exchange
- Discuss statewide transportation issues (hurricanes, safety, PPP, etc.)
- Leverage financial capabilities



2 Categories of Membership

PUBLIC SECTOR

- Toll, expressway and bridge authorities
- FDOT, FTC, etc.

Membership Database = 1200

23

Authorities and Organizations

CORPORATE SECTOR

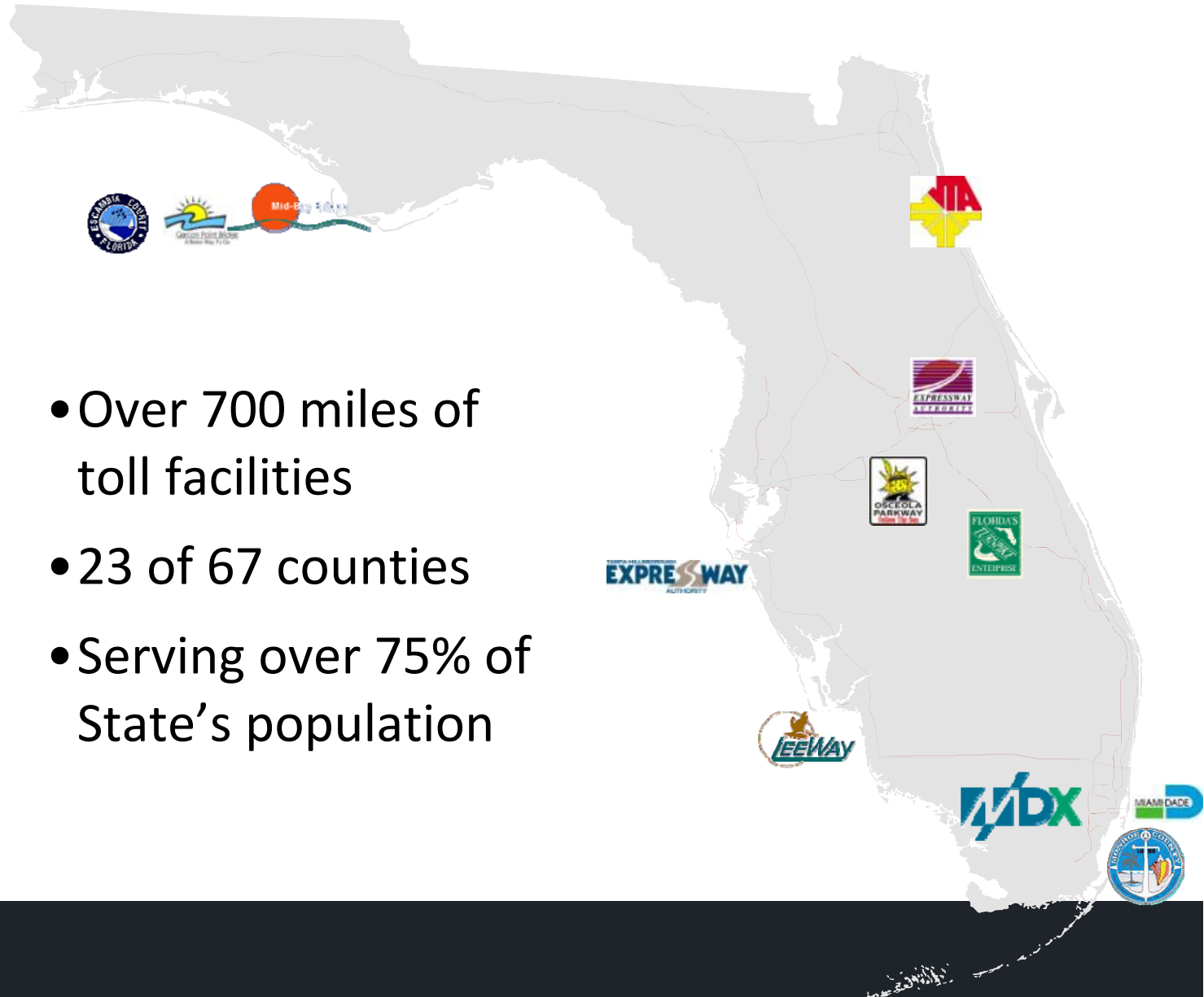
- Professional Service Organizations

201

Member Companies



TEAMFL Members



- Over 700 miles of toll facilities
- 23 of 67 counties
- Serving over 75% of State's population

Florida Toll Roads and Bridges

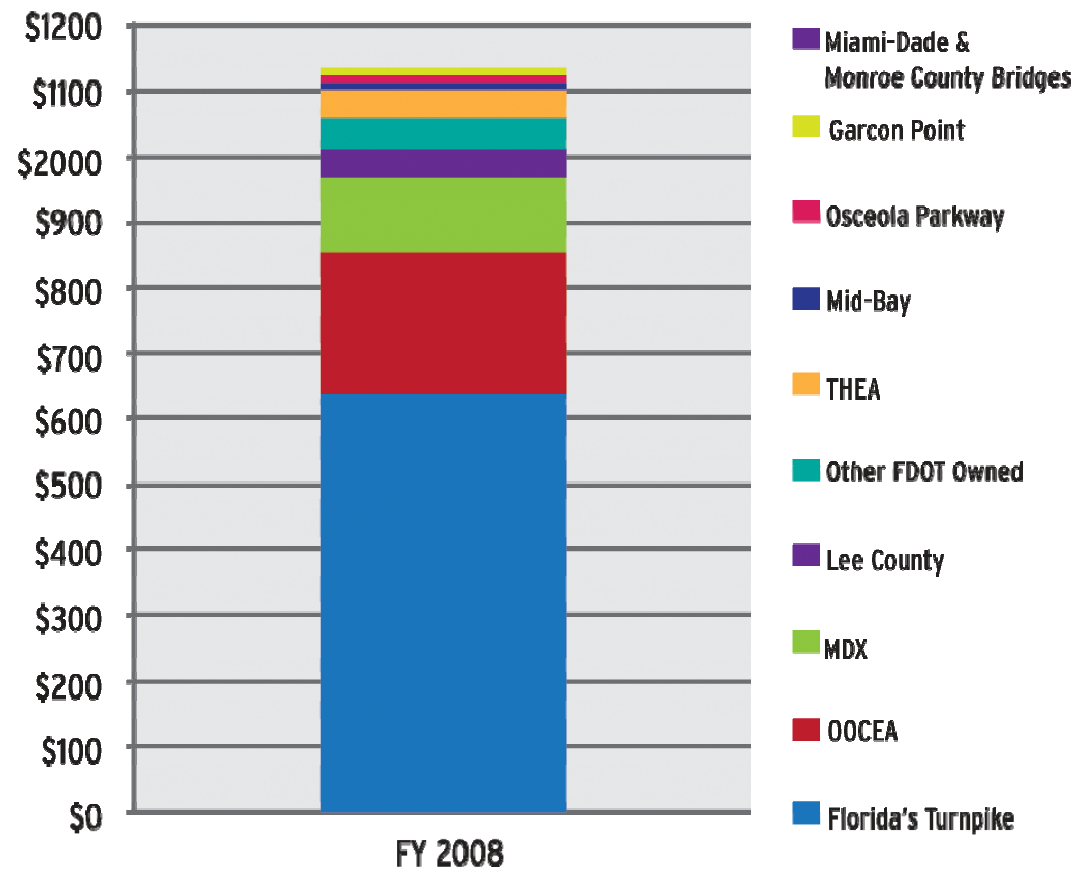
- Over 10B vehicle miles traveled on toll facilities each year
- Nearly 2 ½M customers drive Florida's toll roads and bridges each day
- Customer satisfaction surveys:
 - 91% overall / 97% ETC satisfiedRecent surveys (TPK/OOCEA)



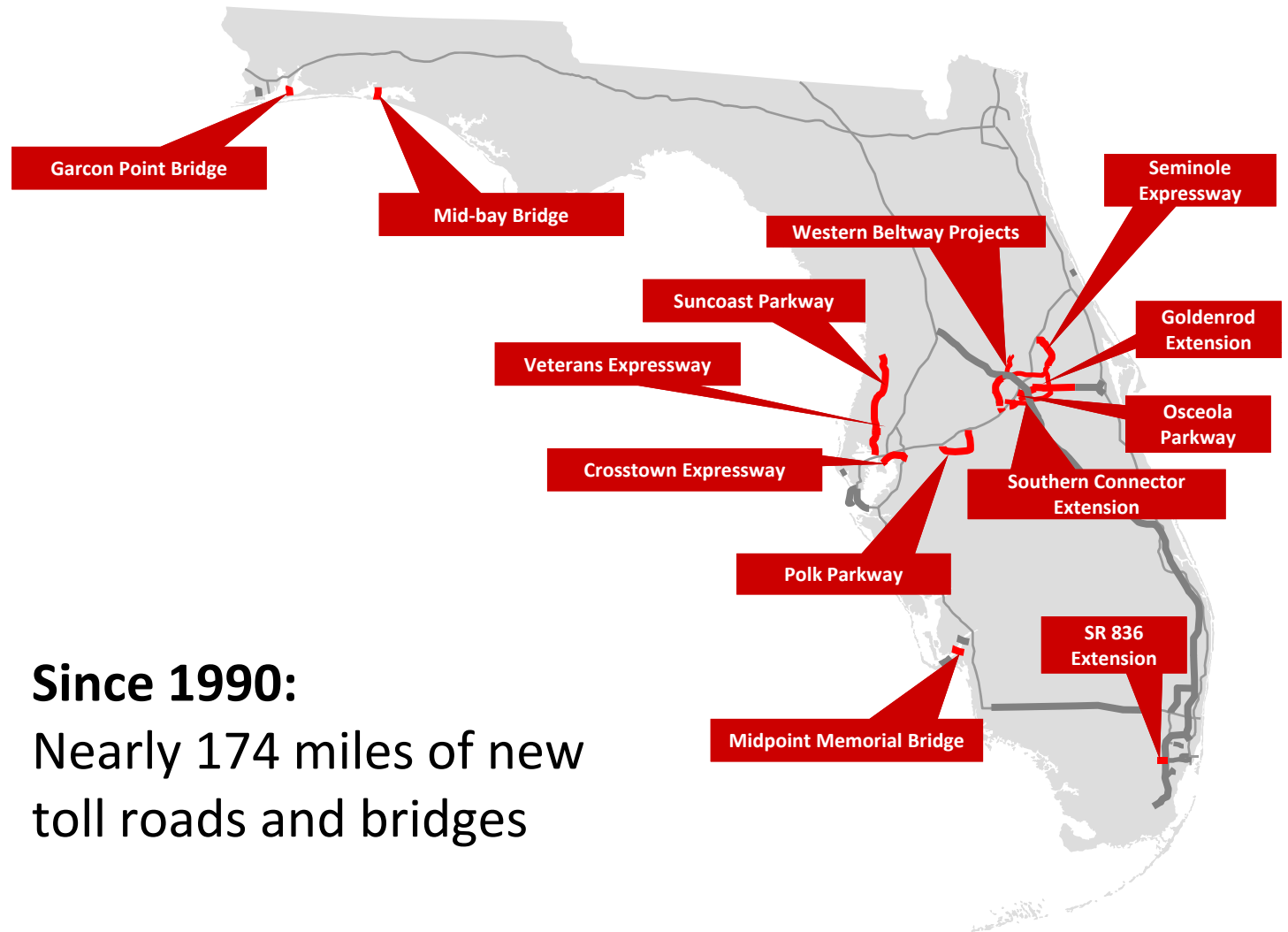
Gross Revenues by Toll Facility

- Gross Revenue Impacts:

- Over \$1B in non-tax revenues
- Similar to 11¢ gas tax
- Growing at ≈ 1¢ gas tax per year until FY07
- In FY10, toll revenues increased by 2%
- Backs ≈ \$5B revenue bonds



Toll Roads and Bridges Since 1990



Since 1990:
Nearly 174 miles of new
toll roads and bridges

Florida Toll Roads and Bridges

- Since completion of the Interstate (1993), 91% of new corridors are toll facilities
- Over \$10B invested in user-financed facilities



Florida Transportation Facts

- Additional \$45B over 25 years needed to fund highway portion of Strategic Intermodal System
- Each \$1B investment in transportation = 27 – 30 thousand jobs
- Each \$1 invested in transportation = \$5 benefit to economy



Florida Transportation Commission Oversight of TEAMFL Members



- Statutory Authority
- Ten active Authorities and Florida's Turnpike
- Efficiency, productivity, management, operations/budget/management of bonds, compliance with laws and accounting principles
- 17 performance measures for Toll Authorities
- Eight Toll Authority operations indicators
- Annual report to Governor and Legislature

- Growing trend in user-financed facilities to counter shortfalls in conventional (gas tax) funding
- TEAMFL agencies have common mission:
Help Meet Florida's growing transportation needs
- User-financed facilities are part of the solution
- TEAMFL agencies are financially sound and run like a business (public sector motives using private sector methods)
 - Financial engine prompted by growing traffic and revenue
 - Multi-billion dollar work programs
 - High bond ratings safeguard investment community
 - Technology advancements control operating and capital cost outlays
 - Customer satisfaction is high
 - TEAMFL agencies create new jobs in Florida

Bottom Line



- Florida is a national leader and model for transportation partnership and tolling
- More toll Agencies in the 21st century
- Pricing used to manage congestion and generate revenues
- Greater use of technology to improve customer safety and service
- Public opinion more positive on tolling if there is perceived value
- Performance management